

Enquiries, Ideas, Proposals

Talk to us at WAZA 2023

Contact us via Whova during the conference

**Dr. James
Musunguzi**

PAAZA
Chairman

**David
Musingo**

PAAZA
East Africa
Chapter Chair

**John
Werth**

PAAZA
Executive Director



PAAZA® Executive Office

John Werth
PAAZA Executive Director
johnw@zoosafrica.com

Sophie Vrand
PAAZA Exec Assistant
sophie@zoosafrica.com

More information soon at:
[www.paaza.org/
evolvingzoos.html](http://www.paaza.org/evolvingzoos.html)

WELFARE

EDUCATION

CONSERVATION

in-situ / ex-situ



Regional
Association
of



KNOWLEDGE *is* CONSERVATION

NEW | Partnership
Opportunities
in *Africa*

*Ready to be an
African Wildlife Hero?*



Roasted *for*
Conservation



A Partnership
with
**WILD
REPUBLIC.**



Roasted for
Conservation



A Partnership
with
Mastertons
COFFEE & TEA SPECIALISTS SINCE 1924

Reduce, Reuse & Recycle... with an extra message!

As an *ex-situ* wildlife community, we promote the importance of **Conservation Education**. But how do we communicate this all encompassing term and where does this begin?

With the launch of the **'Message from the Planet'** range from Wild Republic at WAZA 2022, a synergy with PAAZA's programme in Africa was immediately apparent. The **'Knowledge is Conservation'** initiative was born.

We saw the **'Message from the Planet'** as being the premium Conservation range of educational tools available to PAAZA, but a **VERY** powerful tool in creating conservation awareness in primary school children.

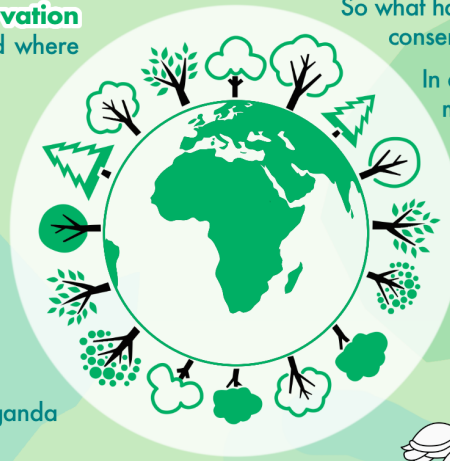
This has proven to be true with the first event being a huge success at Uganda Wildlife Conservation and Education Centre.



There was an immediate connection between the information that the educators had been sharing with the children and the animals they had just received.

Given the economic situation in Africa, the children will in all probability not be able to purchase these, so, we need to come up with a way to make this happen.

Would you like to be involved in the project?



The coffee range that encourages and supports conservation towards endangered African species!

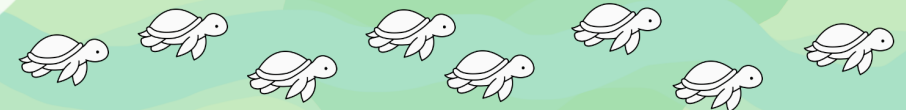
So what happens when the Conservation seed has been sown? All our aspiring conservationists need funding to implement their knowledge and passions.

In addition, to claim success with rehabilitation and reintroduction, post release monitoring is essential. Unfortunately all these activities are costly.

Recently, the world has changed in that random donations are almost a thing of the past. So how do we get the broader community involved without the dreaded "Donate here" button?

By purchasing one of the Conservation Blends, YOU will automatically be contributing to a specific project.

A portion of the sale will be allocated through PAAZA to the relevant project.



The first in the series was the Turtle Blend. The next step was to add blends specific to endangered species as well as country specific blends which will assist conservation projects specific to that species or country.

